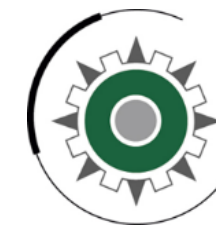


# Control Panel Overview





## Controls incorporated complete Engine Displays and plug and play solutions

Complete engine displays and alarms for mechanical and J1939 engines and mechanical engines.

The ruggedized, waterproof units with watertight, plug and play connectors comes with an easy-to-read OLED display that provides excellent visibility in all lighting conditions and performance to -40°F/-40°C.

Fault codes are displayed with occurrence count, fault message and corresponding yellow or red lamp illumination. View both active and stored codes. Alarm log shows the last 32 faults.

Integrated emissions monitoring and control for regeneration and DEF. Emissions lamps and display messages provide operator information and push button instructions. Covers all emission tiers including final tier 4 and Stage V

Throttle control for J1939 , and optional for mechanical engines.

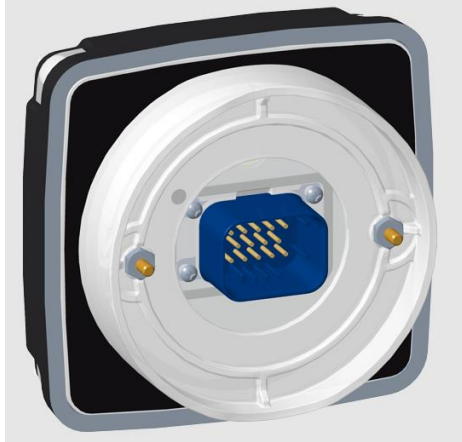
Configurable inputs and outputs are available for common uses like fuel level, alarm inputs or alarm outputs.

Wiring kits are available for a wide range of Kubota engines

The XCAN Series make it possible to convert a analog signal to J1939

# MX SERIES PANELS

MX SERIES panels for generator applications available



## Physical

- Enclosure: Polycarbonate
- Display: Organic Light Emitting Diode (OLED)
- Buttons: Soft Touch Tactile Buttons
- Connectors: Tyco Ampseal
- Dimensions: 4.4"H x 4.5"W x 1.2"D
- Shipping Weight: 1.0 lbs.
- Mounting: 3" Hole Mount
- Environmental: IP67
- Clamping Ring for Mounting

## Temperature

- Operating Range: -40°F/-40°C to 176°F/80°C
- Storage Range: -40°F/-40°C to 176°F/80°C

## Configuration

- Local Settings via Front Buttons

## Electrical

- Operating Voltage: 5.5VDC to 36VDC
- Maximum Current at 12.6VDC: 150mA
- Reverse Polarity Protection: YES
- Transient Voltage Protection: YES
- Load Dump Protection: YES

## Inputs/Outputs

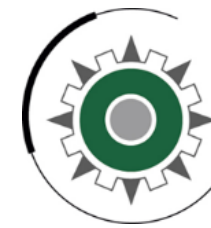
- Analog Input: 3
- Digital Inputs: 2
- Outputs: 2 (Rated at 5A)

## Communications

- J1939 CANbus Available
- RS-485 Modbus Available

## Optional I/O Modules

- Available XCAN-IO & XCAN-AC



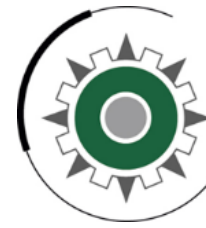
# Prins Maasdijk

Authorized Control Inc Solutions Provider



# MVP SERIES PANELS

MVP SERIES panels for generator applications available



# Prins Maasdijk

Authorized Control Inc Solutions Provider



## Physical

- Enclosure: Polycarbonate
- Display: Organic Light Emitting Diode
- Buttons: Stainless Steel Domes
- Connectors: Deutsch DT Series
- Dimensions: 3.94" Diameter x 2.36" Depth
- Shipping Weight: 0.5 lbs.
- Mounting: 2" Hole Mount
- Environmental: IP67
- Clamping Ring for Mounting

## Temperature

- Operating Range: -40°F/-40°C to 176°F/80°C
- Storage Range: -40°F/-40°C to 176°F/80°C

## Configuration

- Local Settings via Front Buttons

## Electrical

- Operating Voltage: 5.5VDC to 36VDC
- Maximum Current at 12.6VDC: 150mA
- Reverse Polarity Protection: YES
- Transient Voltage Protection: YES
- Load Dump Protection: YES

## Inputs/Outputs

- Analog Input: 1
- Digital Inputs: 2 (Configurable N/O or N/C)
- Outputs: 2 (Rated at 500mA)

## Communications

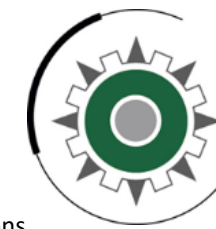
- J1939 CANbus Available
- RS-485 Modbus Available

## Optional I/O Modules

- Available XCAN-IO

# XL SERIES PANELS

XL SERIES panels for generator applications available



# Prins Maasdijk

Authorized Control Inc Solutions Provider



## Physical

- Enclosure: Polycarbonate
- Display: Organic Light Emitting Diode
- Buttons: Soft Touch Tactile Dome Buttons
- Connectors: Tyco Ampseal
- Dimensions: 6.3"H x 7.7"W x 1.6"D
- Shipping Weight: 2.0 lbs.
- Mounting: Four Mounting Holes
- Environmental: IP67

## Temperature

- Operating Range: -40°F/-40°C to 176°C/80°C
- Storage Range: -40°F/-40°C to 176°C/80°C

## Configuration

- Local Settings via Front Buttons

## Electrical

- Operating Voltage: 5.5VDC to 36VDC
- Maximum Current at 12.6VDC: 150mA
- Reverse Polarity Protection: YES
- Transient Voltage Protection: YES
- Load Dump Protection: YES

## Inputs/Outputs

- Analog Input: Up to 7
- Digital Inputs: Up to 8 (Configurable N/O or N/C)
- Outputs: Up to 8 (Rated at 5A)

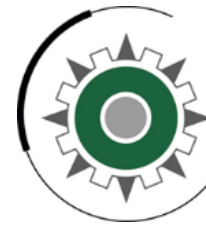
## Optional I/O Modules

- Available XCAN-IO

## Communications

- J1939 CANbus Available
- RS-485 Modbus Available
- Ethernet Option Available

# Plug and Play



# Prins Maasdijk

Authorized Control Inc Solutions Provider



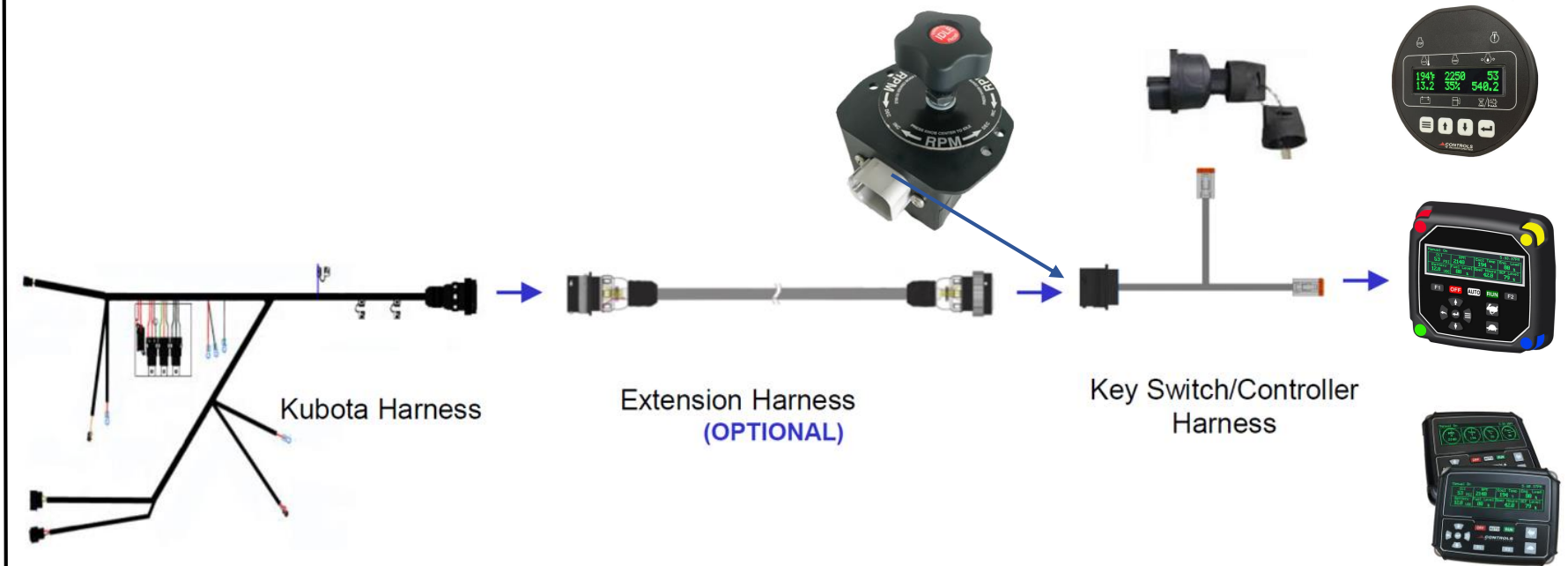
Mechanical Engines



Common Rail Engines



Gasoline / LPG Engines





The J1939 CANbus is the information highway for automotive and industrial equipment. The XCAN SERIES is a range of products that leverages the J1939 CANbus in two essential ways: Broadcasting analog sensor and, second, signal information onto the J1939 CANbus and processing J1939 CANbus commands into relay or other output actions.

### Analog to J1939 Devices

**XCAN** - Mechanical Engine to J1939

**XCAN-AC** - Generator to J1939

**XTRAN** - Transmission to J1939

**XCAN-IO** - 0-5V, 4-20mA or Resistive Sender to J1939

### J1939 Control

**XCAN-IO** - J1939 CANbus Commanded Relay Control

These water tight, plug and play devices can be mixed and matched with other Controls Inc products like the **MVP SERIES**, **C SERIES** and **XL SERIES** for a single, integrated engine or equipment control system or added independently to and existing J1939 CANbus network.