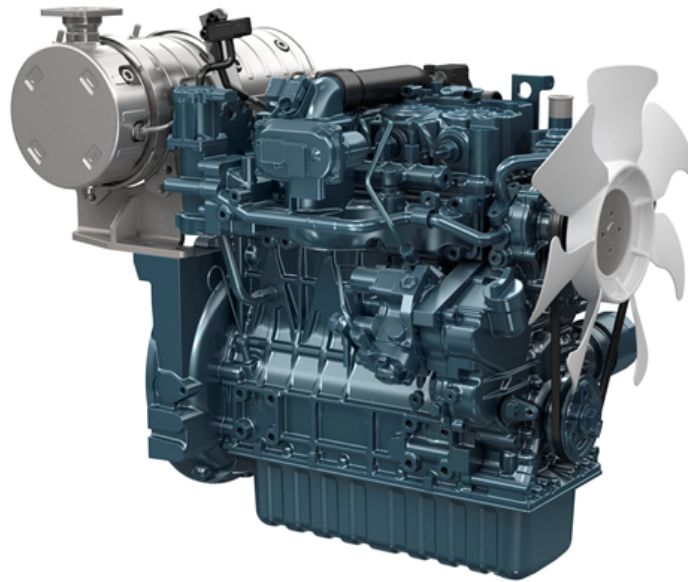
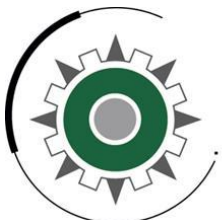


**INDUSTRIAL DIESEL ENGINE****Kubota 05 Series (4-Cylinder)****V1505-CR-T****Engine Specifications**

<b>Engine model</b>	<b>V1505-CR-T</b>	
<b>Emission regulation</b>	<b>EPA/CARB Tier4 Final + EU Stage V ready</b>	
<b>Type</b>	<b>Vertical, water cooled 4-cycle diesel engine</b>	
<b>Cylinders</b>	<b>4</b>	
<b>Bore and Stroke</b>	mm (in)	<b>78.0 × 78.4 (3.071 × 3.087)</b>
<b>Displacement</b>	L (cu.in)	<b>1.498 (91.41)</b>
<b>Aspiration</b>	<b>Turbocharged</b>	
<b>Aftertreatment</b>	<b>Diesel Oxidation Catalyst (DOC) + Diesel Particulate Filter (DPF)</b>	
<b>Rated output / speed *1</b>	kW (HP) / rpm	<b>33.0 (44.3) / 3000</b>
<b>Maximum torque / speed *1</b>	Nm (lb-ft) / rpm	<b>118.5 (87.4) / 2000</b>
<b>Combustion system</b>	<b>Direct Injection</b>	
<b>Fuel system</b>	<b>Common rail system</b>	
<b>Length x Width x Height *2</b> (with aftertreatment unit)	mm (in)	<b>766 × 466 × 686</b> <b>(30.2 × 18.3 × 27.0)</b>
<b>Dry weight *2</b>	kg (lb)	<b>169 (373)</b>

Specifications are subject to change without prior notice.  
 Dimensions and dry weight are according to Kubota's standard specification.  
 Dimensions and weight depend on completed specifications.

\* 1: Gross intermittent SAE J1995  
 \* 2: Exclude cooling fan



# Prins Maasdijk

Tuindersweg 37 - 2676 BD Maasdijk – Netherlands  
 Tel. (31) 0174 51 60 11 - Fax (31) 0174 51 81 42